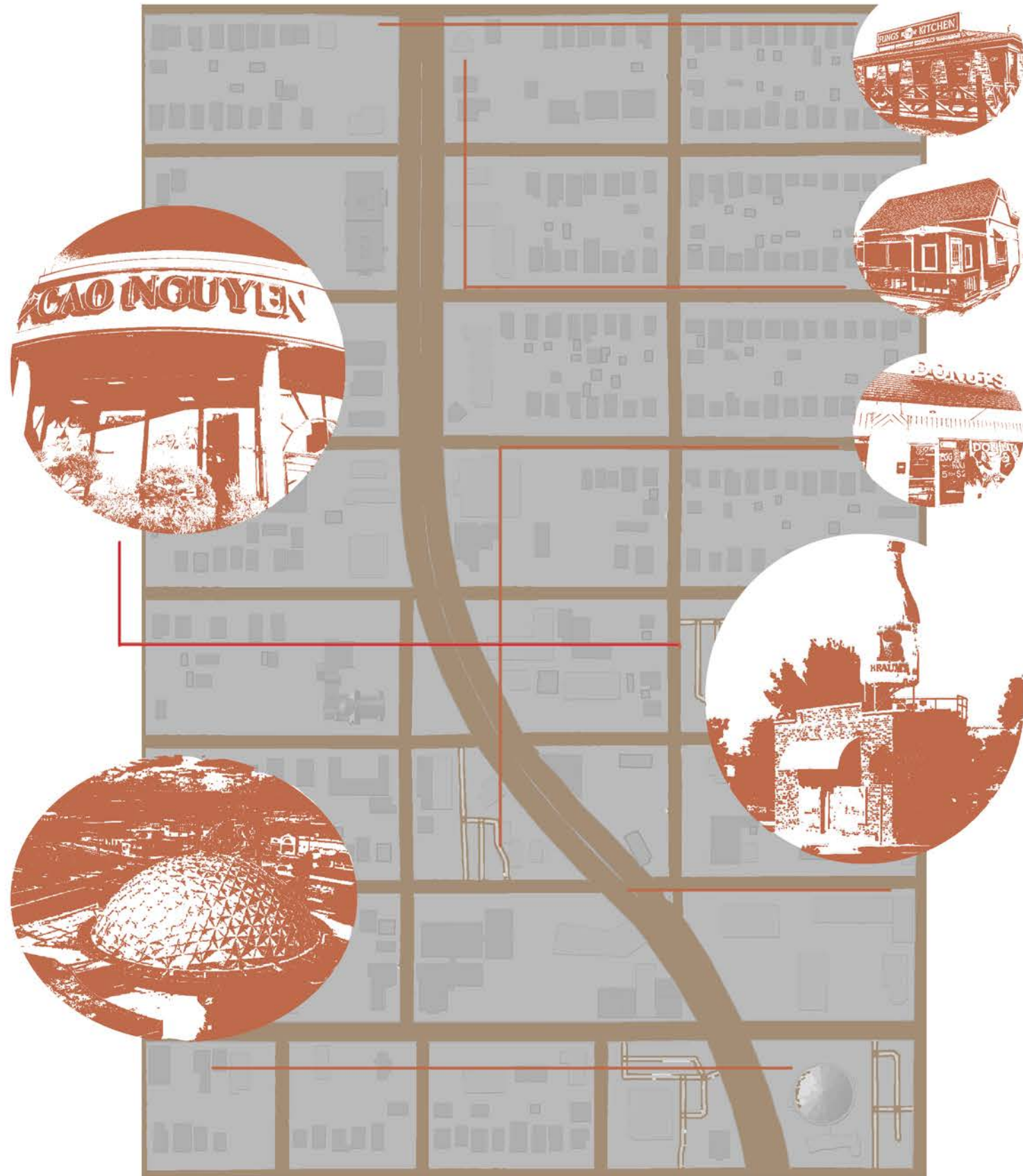


ASIAN DISTRICT



OU Institute for Quality Communities

Redesigning the streetscape / pedestrian experience

OU Christopher C. Gibbs College of Architecture 2021

Project location: Oklahoma City, OK
Along Classen from NW 23rd -30th St.

Brief History

1975

"Little Saigon"

Fall of Saigon
approximately 7,000 Vietnamese
refugees migrated to the neighborhoods

Diverse Asian Population / Business Growth

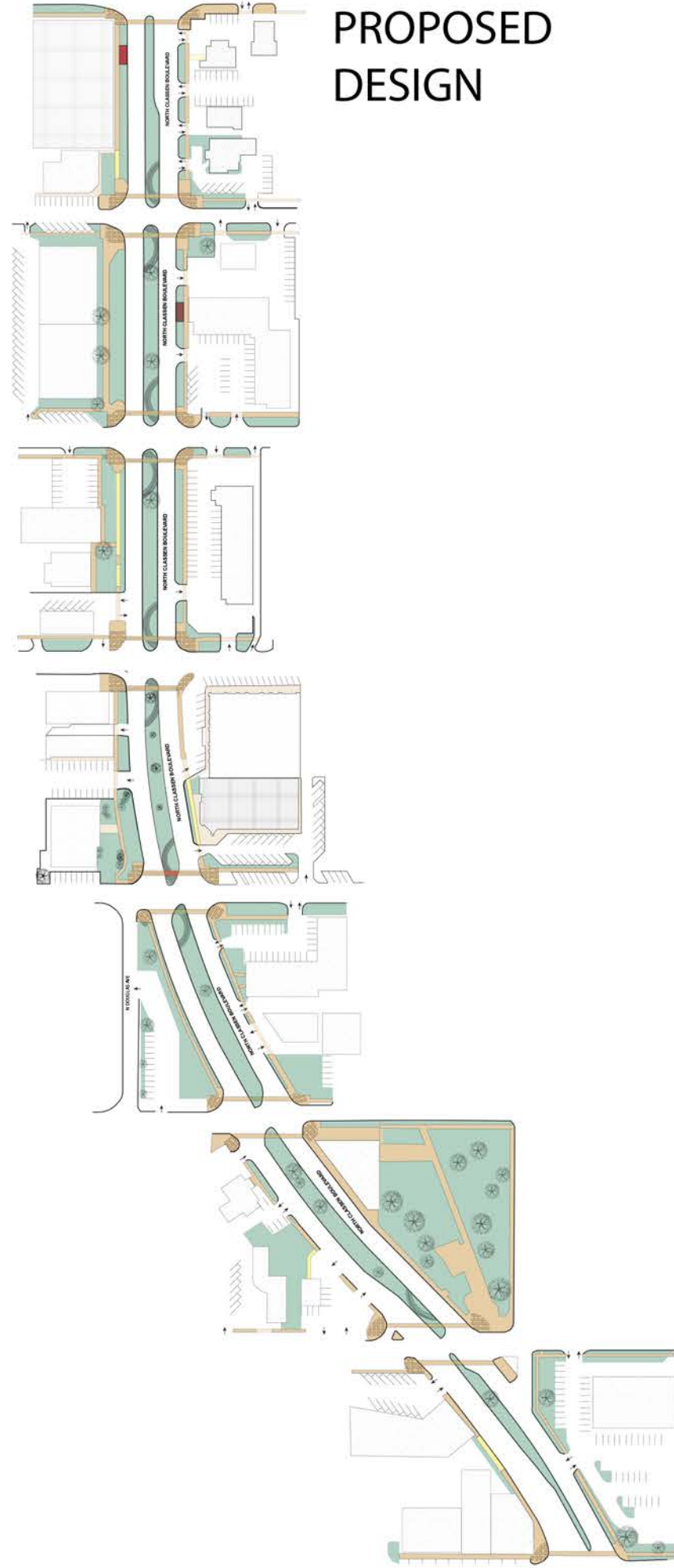
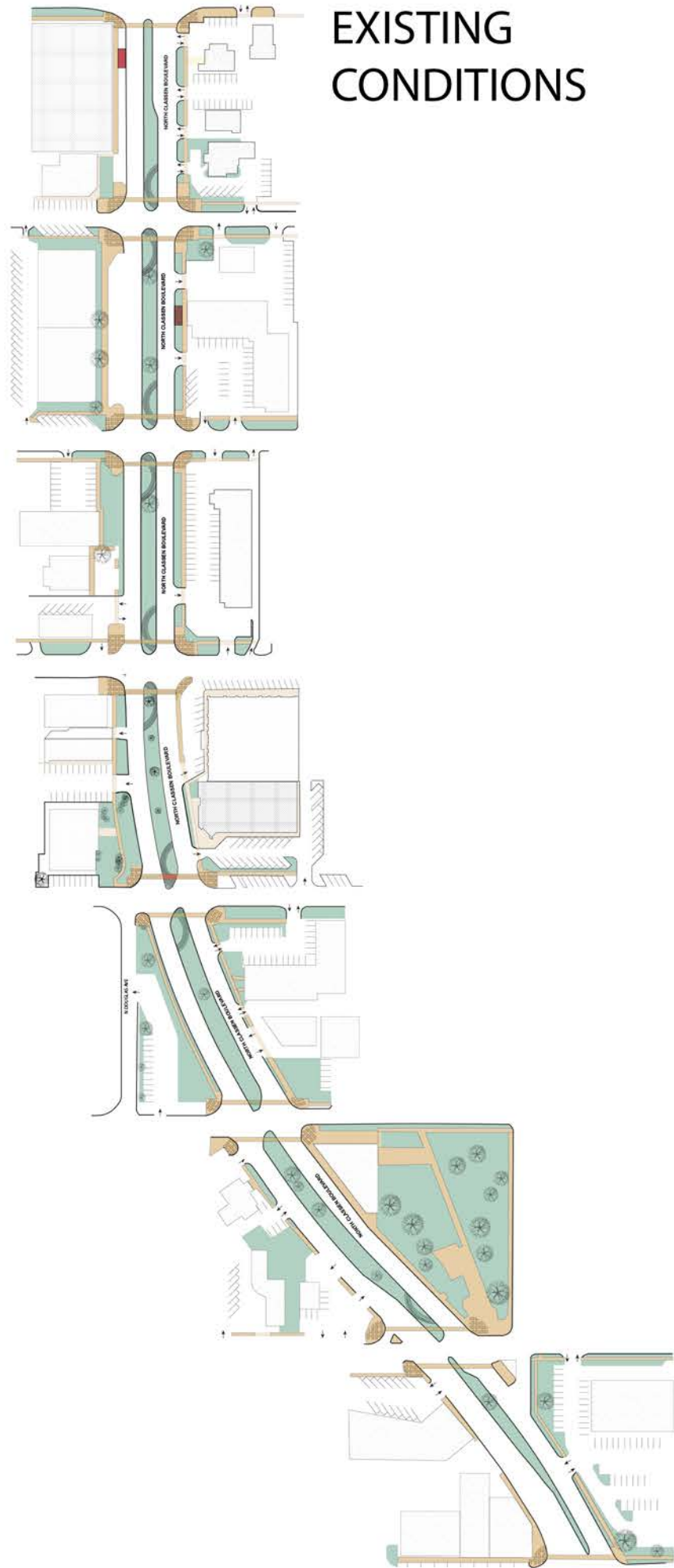
2021





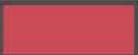
"Asian District"

In 2005 the district was officially named
the Asian District to reflect the diverse
community that had grown in the area

EXISTING CONDITIONS

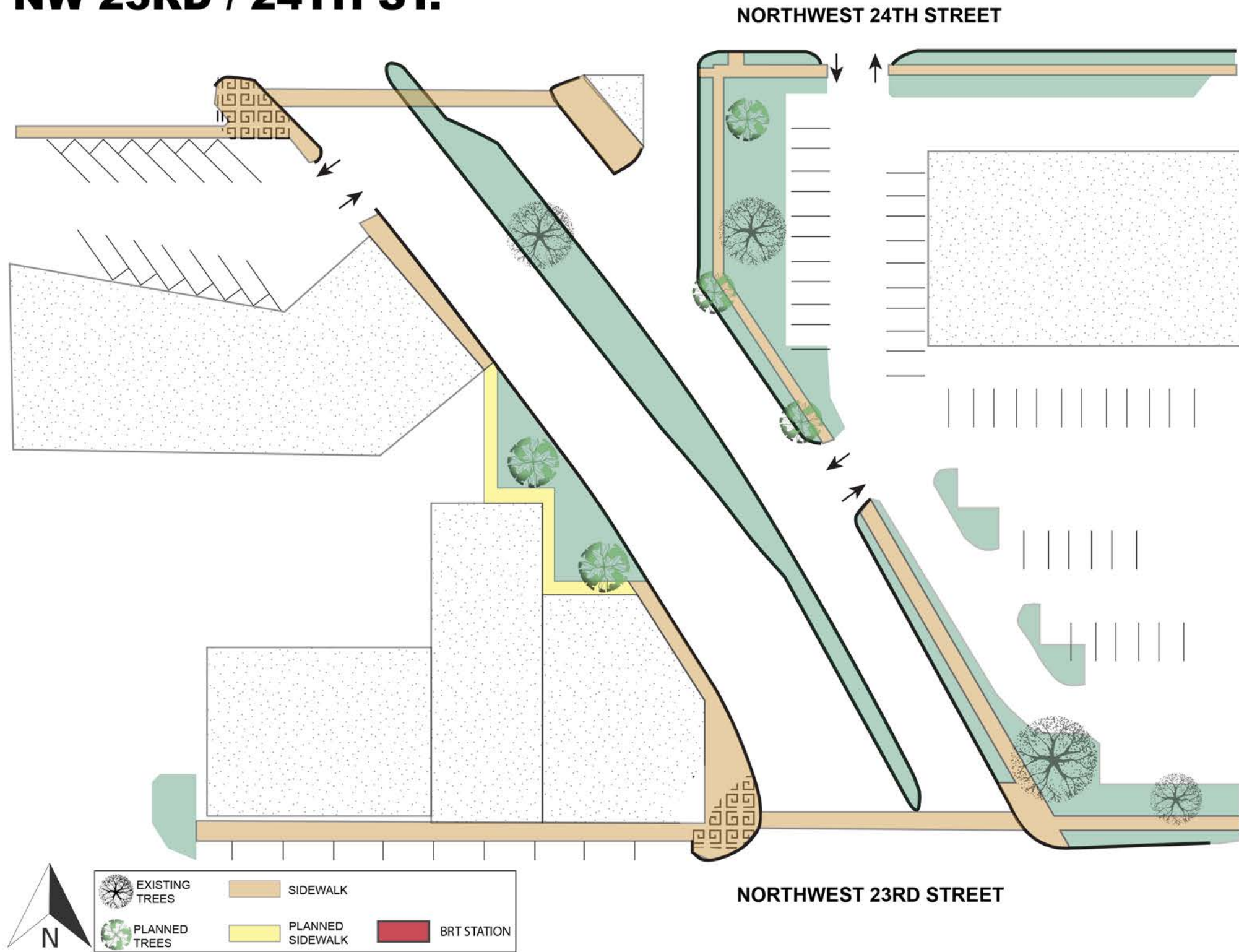
PROPOSED DESIGN



	EXISTING TREES
	PLANNED TREES
	SIDEWALK
	PLANNED SIDEWALK
	BRT STATION



NW 23RD / 24TH ST.



BEFORE



AFTER

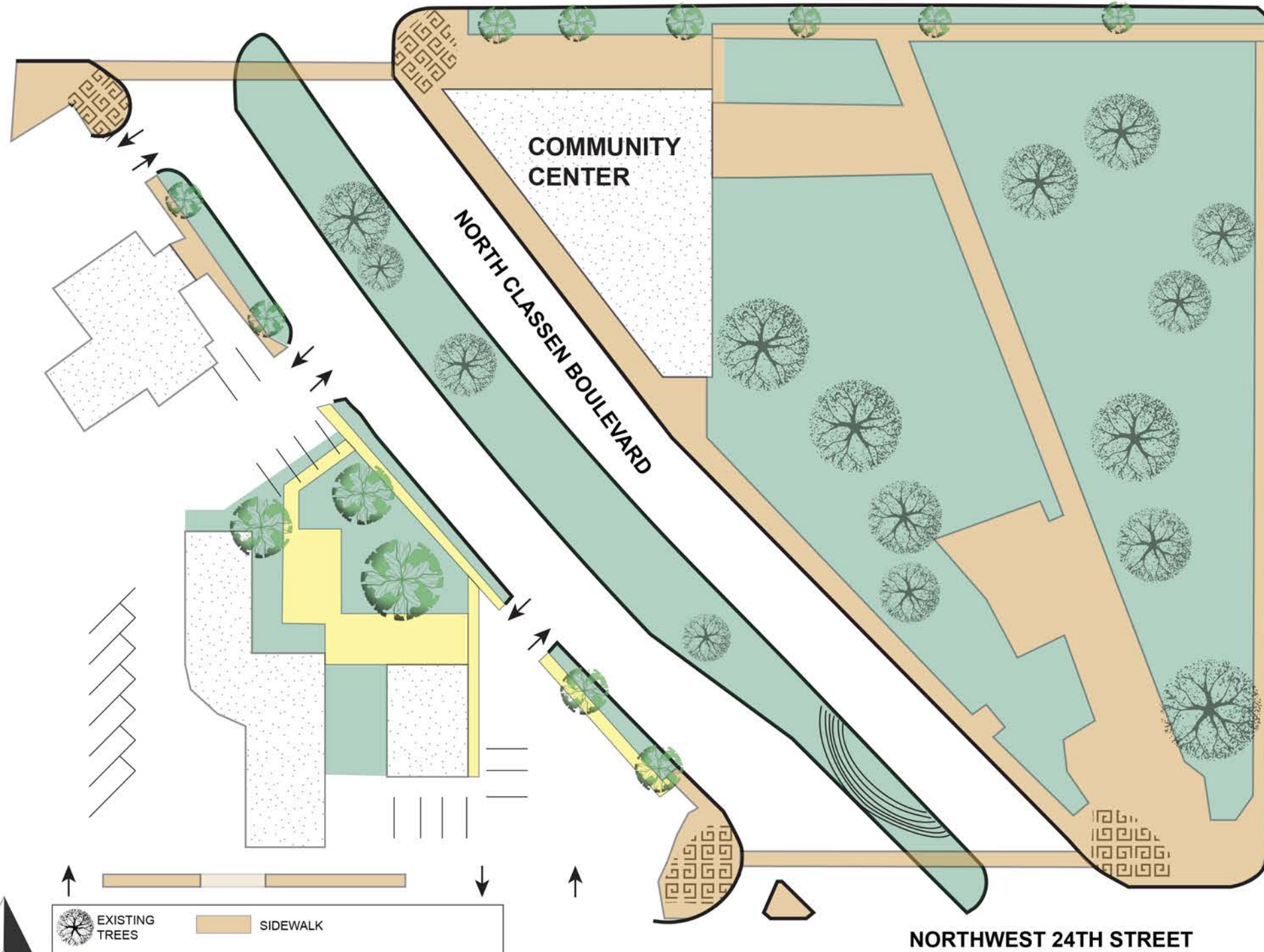


DESIGN STRATEGIES:

The west sidewalk has the potential to be converted into an art walk. By adding murals on the wall and sidewalk it would really vitalize the area that currently has no use. The sketch above shows how the area could look with these changes.

NW 24TH / 25TH ST.

NORTHWEST 25TH STREET



BEFORE



AFTER



DESIGN STRATEGIES:

Military park has made this block the heart of the district. Currently, Quoc Bao Bakery has the potential to create these outdoor spaces that would invite more people into the area. By adding Golden Rain Trees next to that area i would help block the sound of the street and seclude the area from the street.

NW 24TH / 25TH ST. (Cont.)

BEFORE



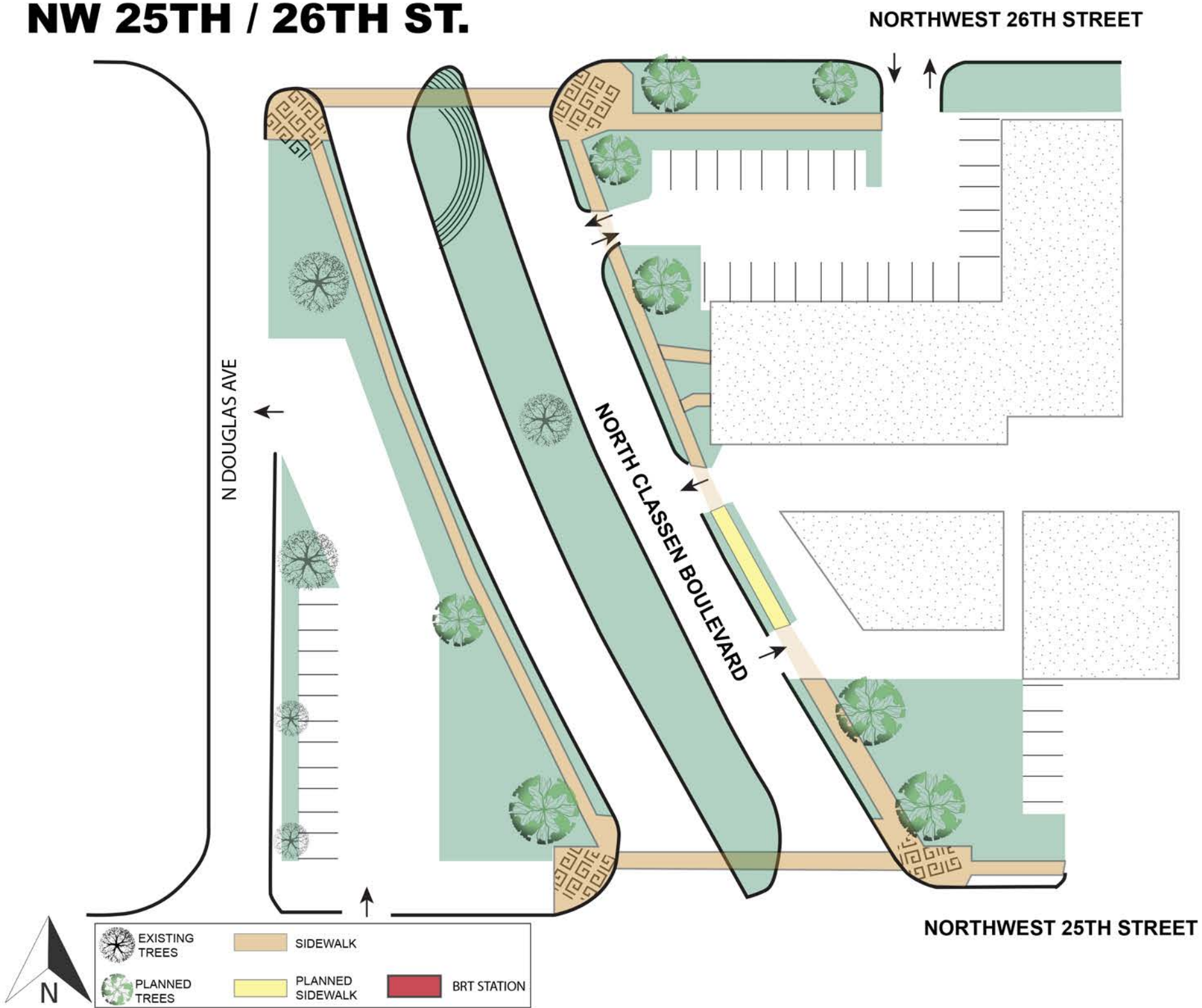
AFTER



DESIGN STRATEGIES:

The left sketch illustrates the changes to the sidewalk next to Quoc Bao Bakery. This sidewalk would enhance the pedestrian experience while also directing people towards the Bakery. The middle sketch is an idea of how the BRT stop could look. The right sketch illustrates the crosswalks along Classen and how art and color would really help slow traffic and have more people use the crosswalks.

NW 25TH / 26TH ST.



BEFORE



AFTER

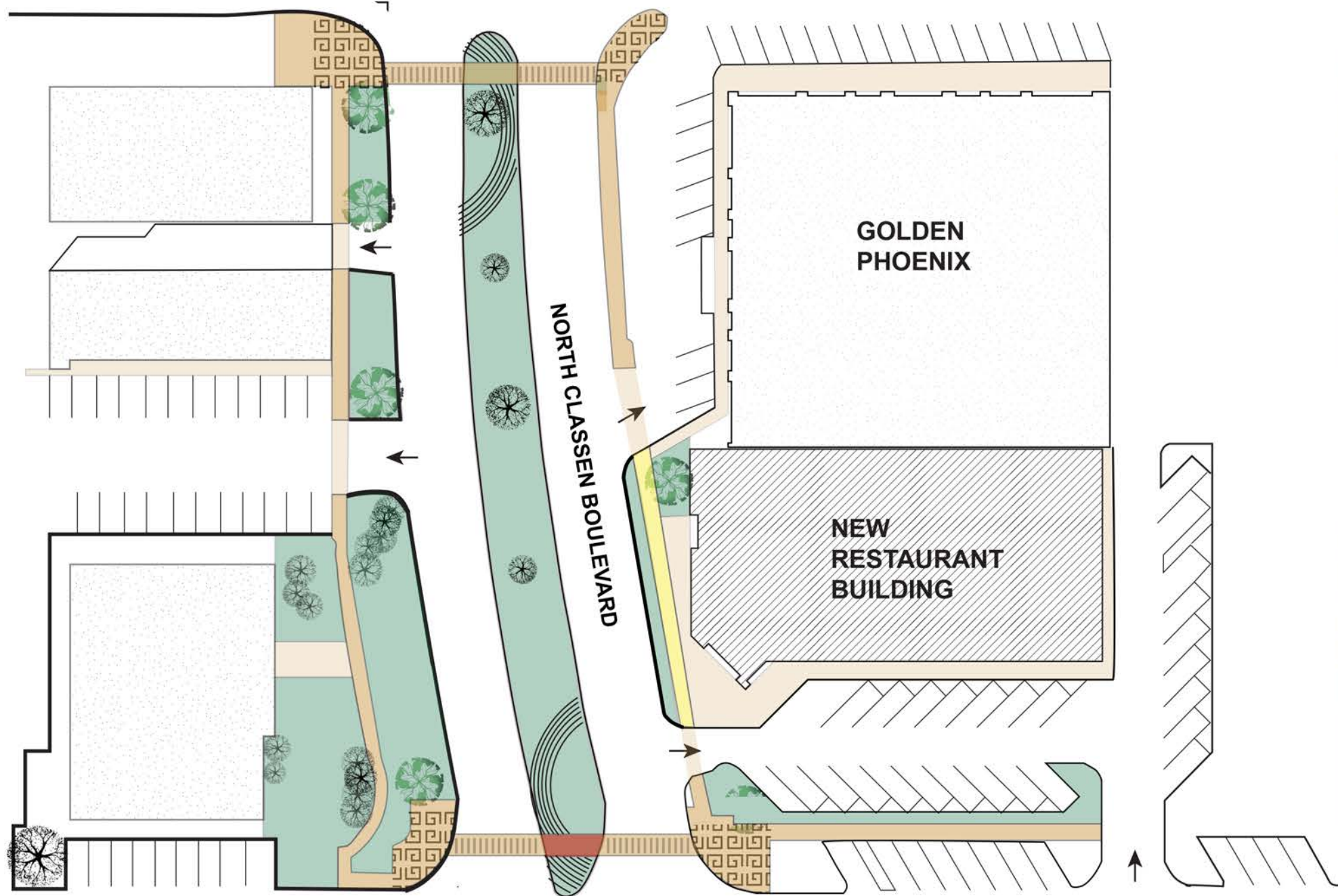


DESIGN STRATEGIES:

The eastern sidewalk currently has a long split. By reducing the curve cuts it allows walking circulation to flow more smoothly.

NW 26TH / 27TH ST.

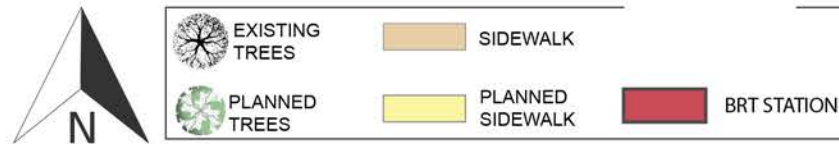
NORTHWEST 27TH STREET



BEFORE



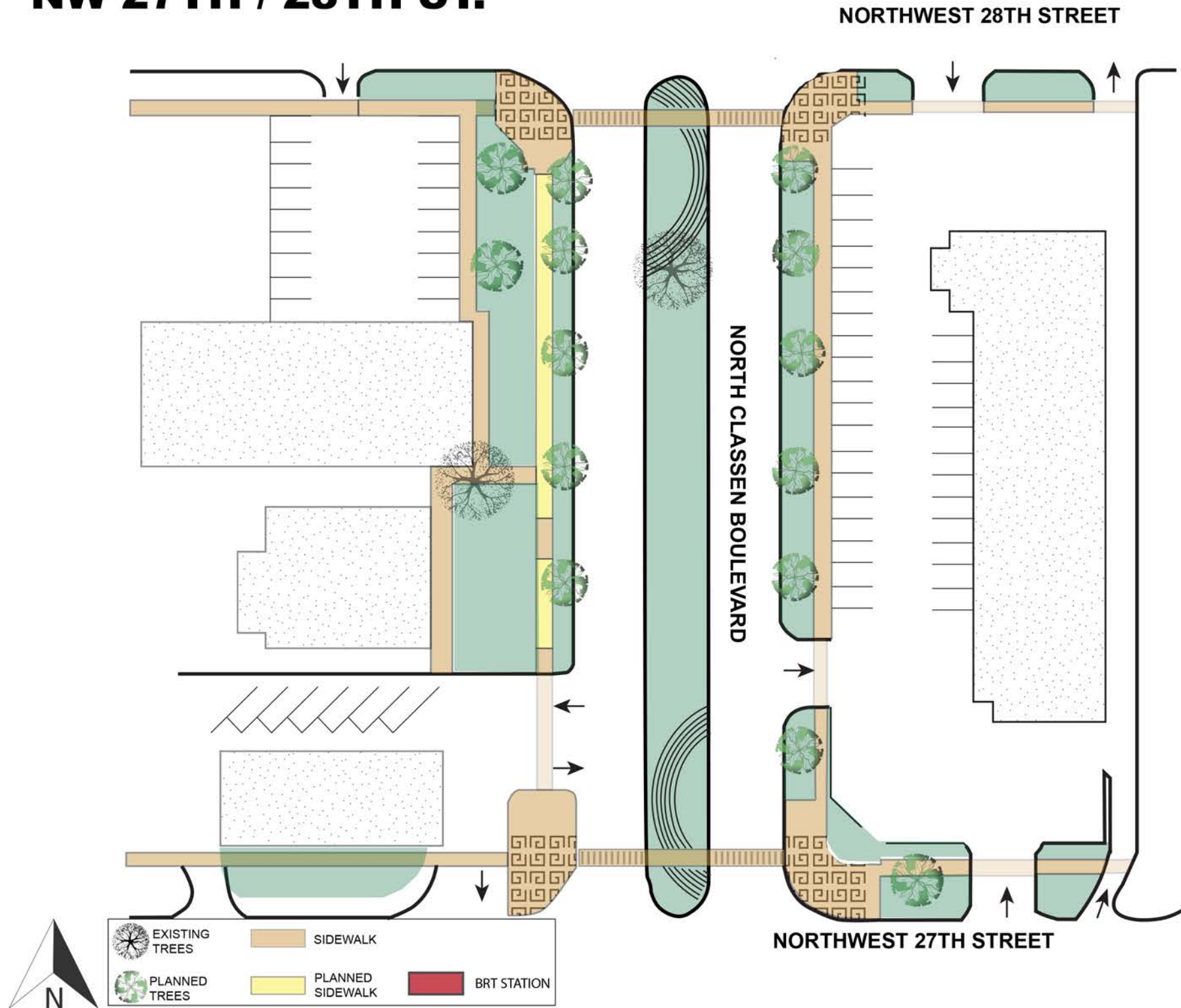
AFTER



DESIGN STRATEGIES:

The western sidewalks are currently well designed. The strategy here would be to add a grass buffer in front of Classen Collective and plant Kentucky Coffee Tree's. The eastern side of the block is Golden Phoenix. They currently have plans to expand and add parking in the empty lot. We decided to respect the proposed design and not make any changes.

NW 27TH / 28TH ST.



BEFORE



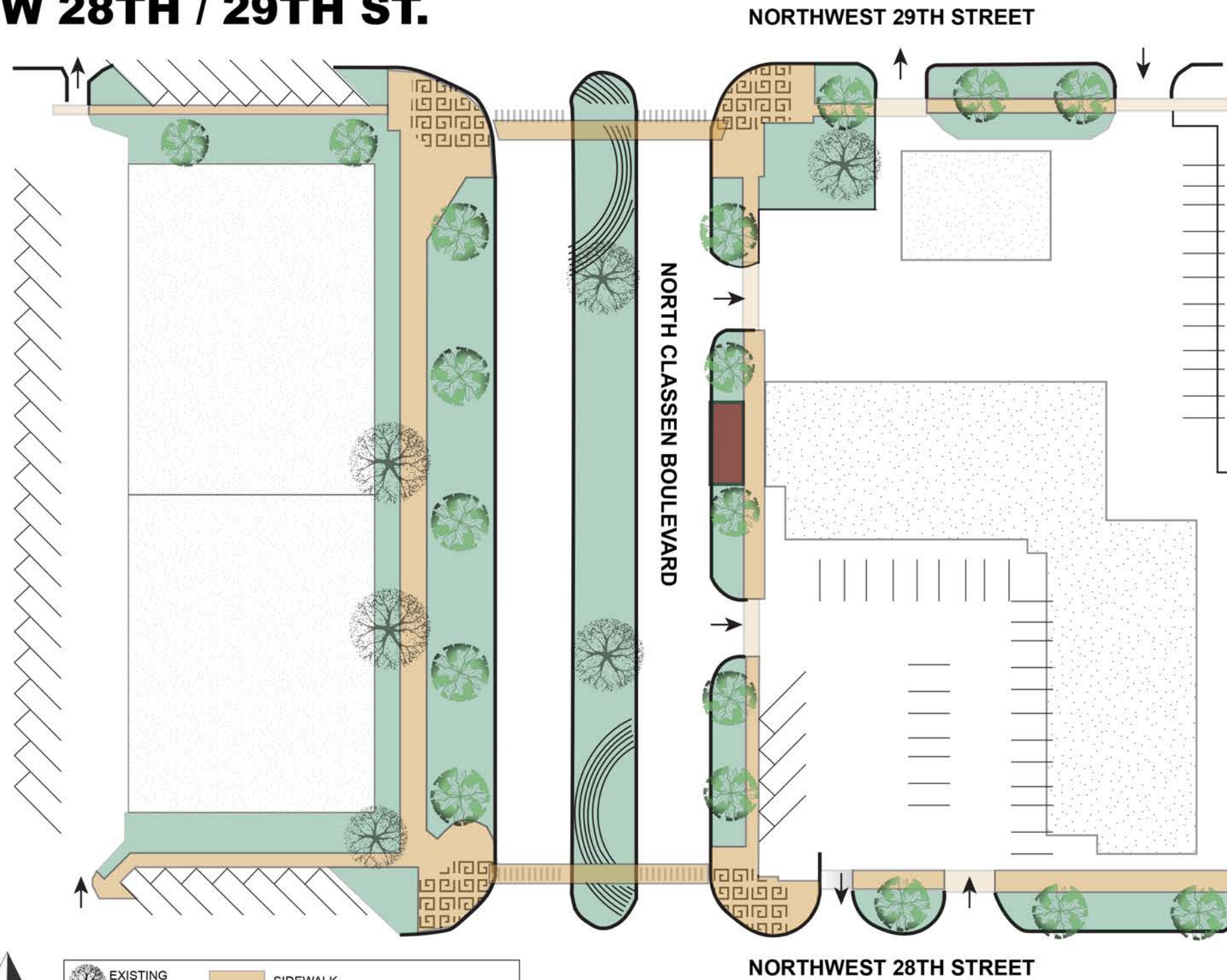
AFTER



DESIGN STRATEGIES:

The western sidewalk currently has a sea of pavement. Our idea would be to remove the parking along the street and add a grass buffer as well as more green space next to the business. The trees planted along the street on both sides would be Chinese Pistache with two Golden Rain trees in the green space of the western sidewalk.

NW 28TH / 29TH ST.



BEFORE



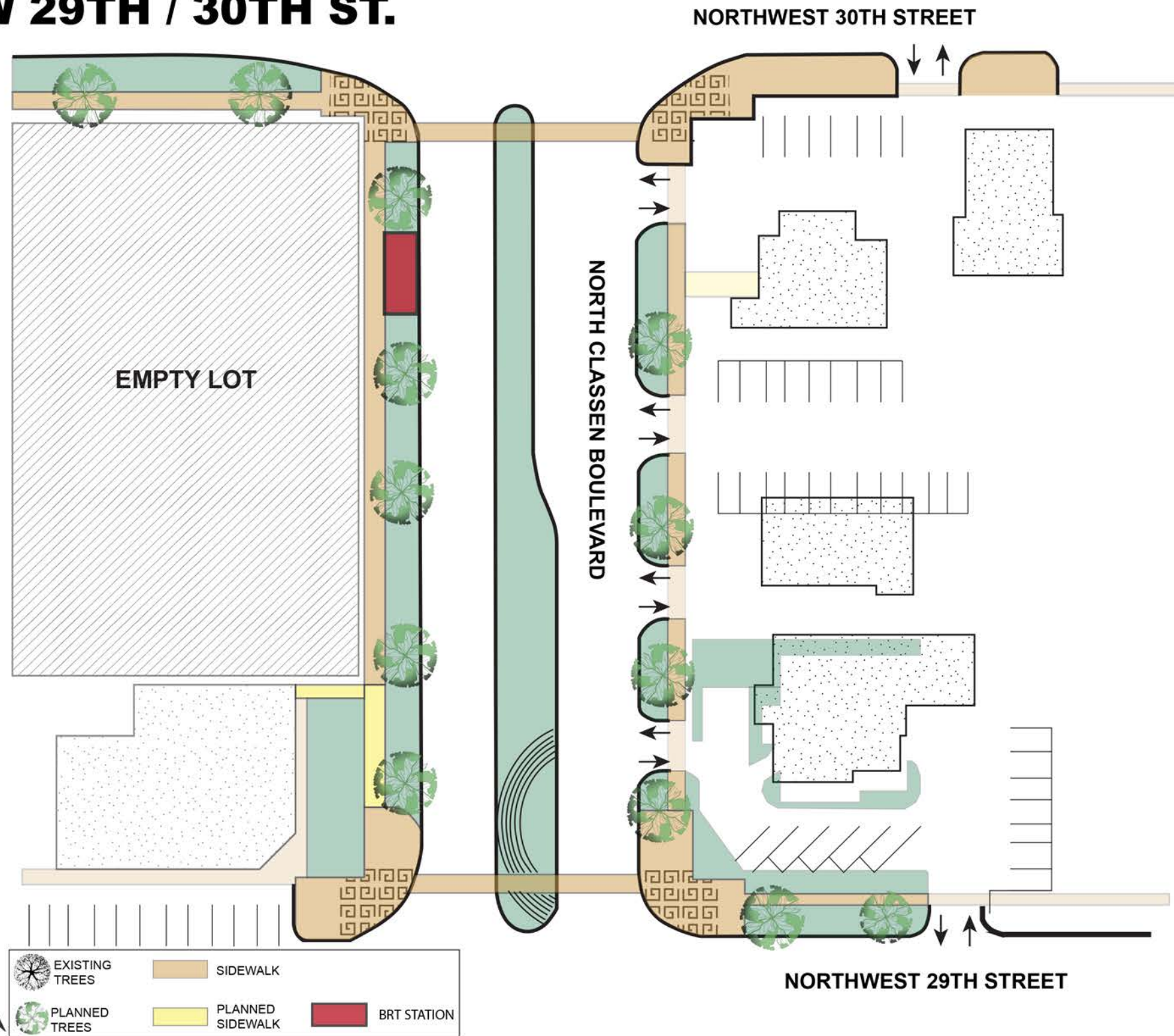
AFTER



DESIGN STRATEGIES:

The western sidewalk is currently street parking. The idea would be to remove the parking and add a grass buffer. This would not only benefit the pedestrian experience but also traffic safety. The placement of the Chinese Pistache allows the buildings to be framed rather than being hidden.

NW 29TH / 30TH ST.



BEFORE



AFTER



DESIGN STRATEGIES:

The western sidewalks currently has no grass buffer. It is wide enough to add one while not having to re-pave the sidewalk. Adding Chinese Pistache on both sides to highlight the businesses while framing the ending of the district.